



# SUBLEASE OPPORTUNITY

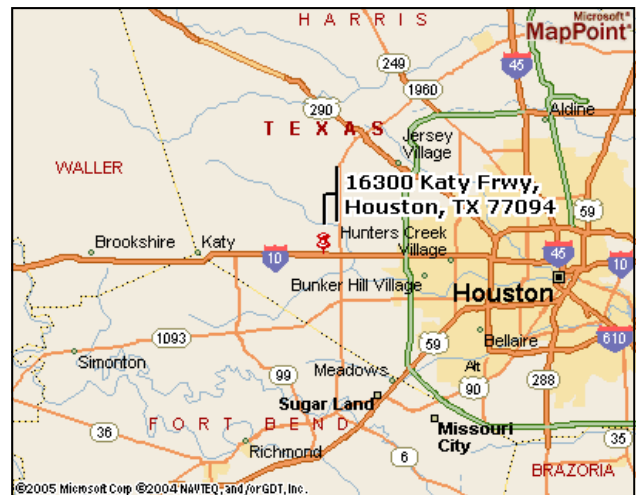
## Two Park Ten Place

### 16300 Katy Freeway, Suite 200 Houston, Texas



### Property Highlights

- *Size:* 6,210 NRA
- *Term:* Through June 30, 2007
- *Lease Rate:* \$14.50
- *Expense Stop:* 2005 Base Year
- *Leasehold Improvements:* The space is offered "as is". The space is "open concept" and includes a conference room and break room.
- *Possession:* 30 Days
- *Floor Plan:* See Reverse Side



FOR MORE INFORMATION, PLEASE CONTACT:  
**Clay Peeples, SIOR**  
 713.599.3443 direct  
 713.877.8400 main  
 713.877.1019 fax  
 cpeeples@boydcommercial.net

Boyd Commercial, LLC • 2200 West Loop South • Suite 420 • Houston, Texas 77027 • [www.boydcommercial.net](http://www.boydcommercial.net)

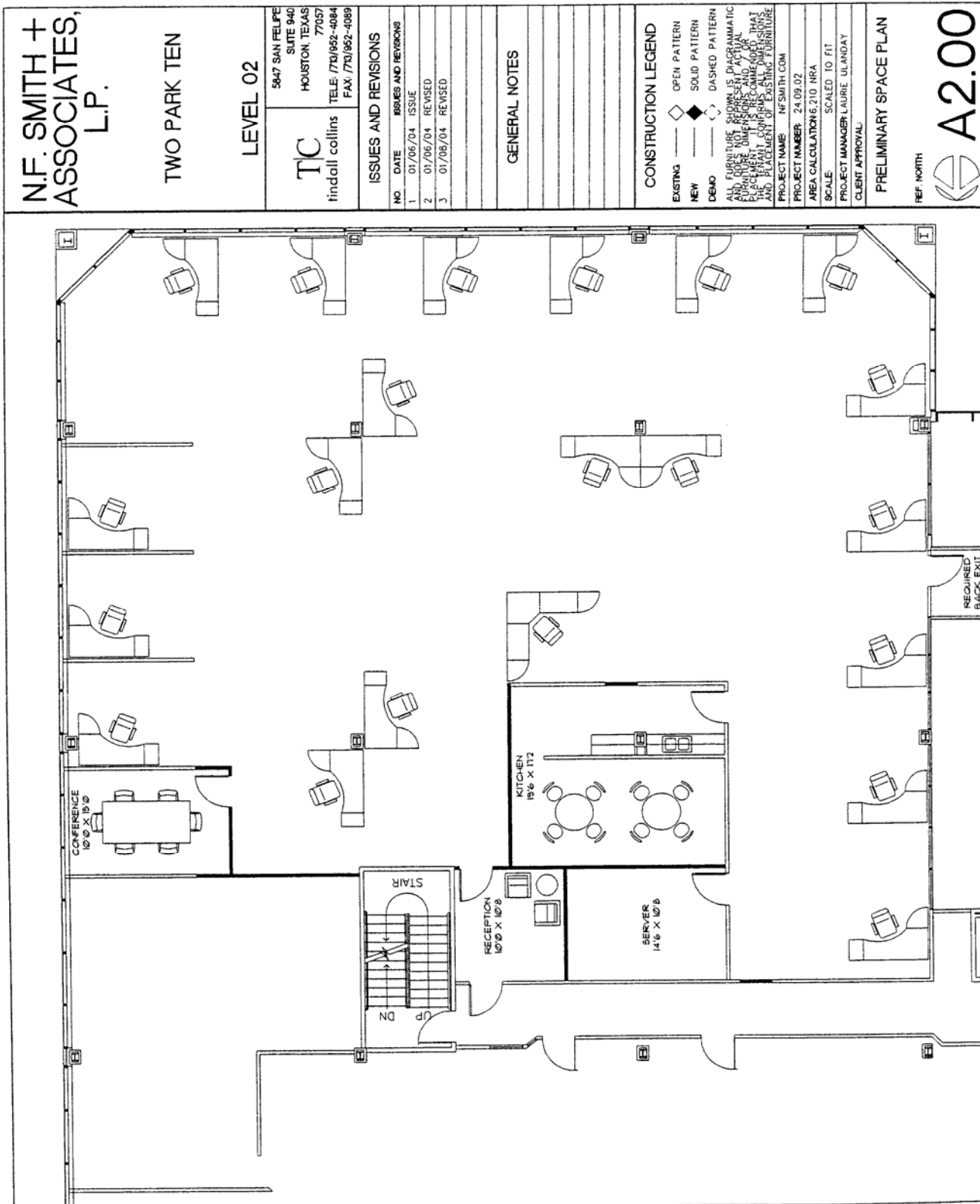


INDIVIDUAL MEMBERSHIPS  
SOCIETY OF INDUSTRIAL AND  
OFFICE REALTORS



# SUBLEASE OPPORTUNITY

## Two Park Ten Place



REF. NORTH

**A2.00**

PRELIMINARY SPACE PLAN

Boyd Commercial, LLC • 2200 West Loop South • Suite 420 • Houston, Texas 77027 • [www.boydcommercial.net](http://www.boydcommercial.net)



INDIVIDUAL MEMBERSHIPS  
SOCIETY OF INDUSTRIAL AND  
OFFICE REALTORS



The information contained herein is believed to be correct, however, no warranty or representation is made. All specifications are subject to change without notice and property is subject to prior lease, sale or withdrawal from the market without notice.